

LAKE POINT CENTRE

A PLAT OF A PARCEL OF LAND LYING IN THE SOUTHWEST ONE-QUARTER (SW 1/4) OF SECTION 22, TOWNSHIP 43 SOUTH, RANGE 42 EAST, CITY OF WEST PALM BEACH, PALM BEACH COUNTY, FLORIDA.

64

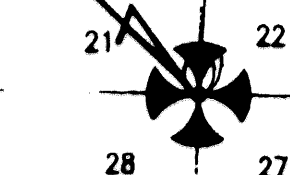
SEE SHEET 3 OF 4
MATCH LINE

SEE SHEET 3 OF 4
MATCH LINE

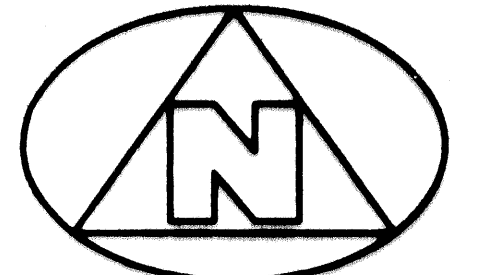
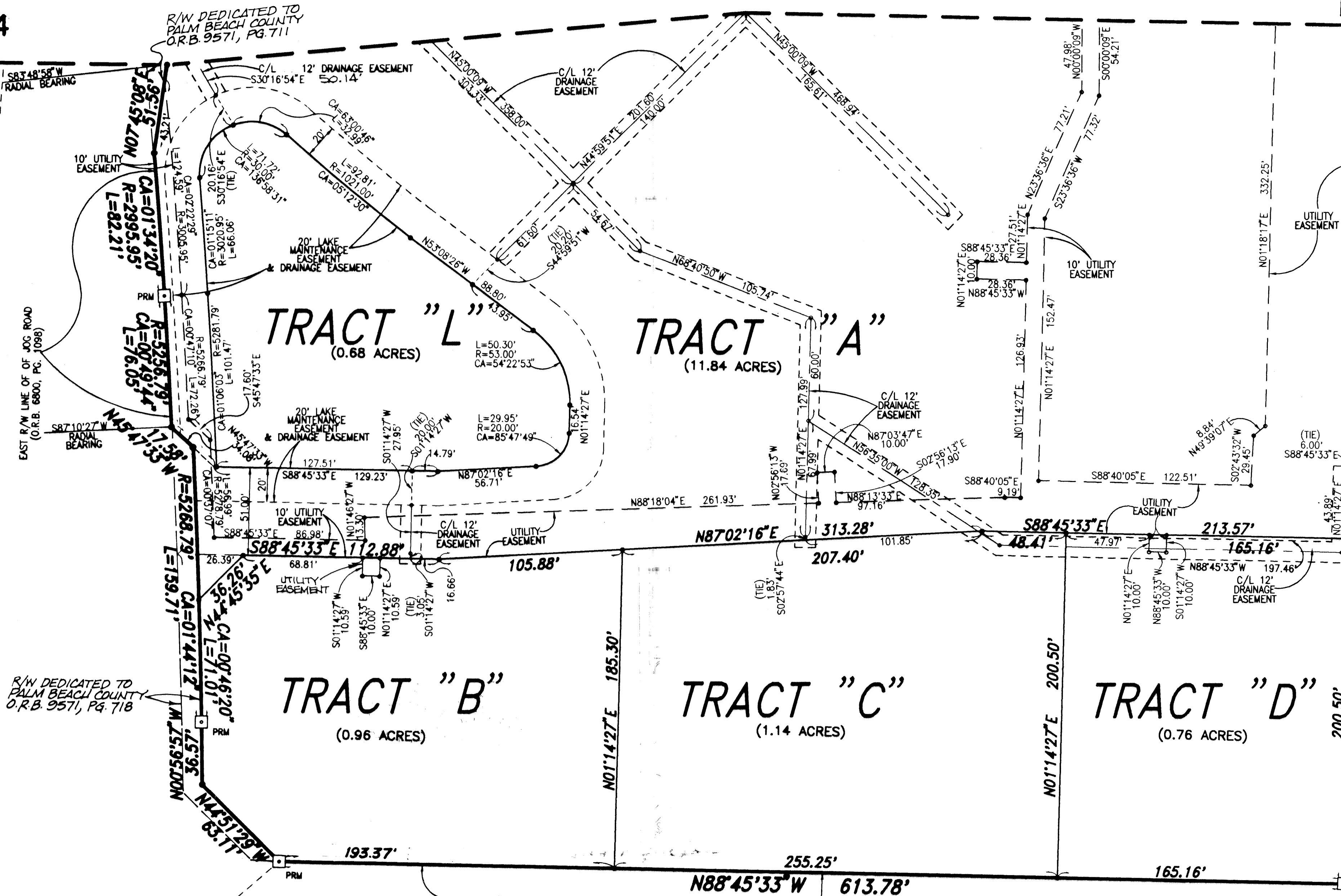
ROAD

JOG

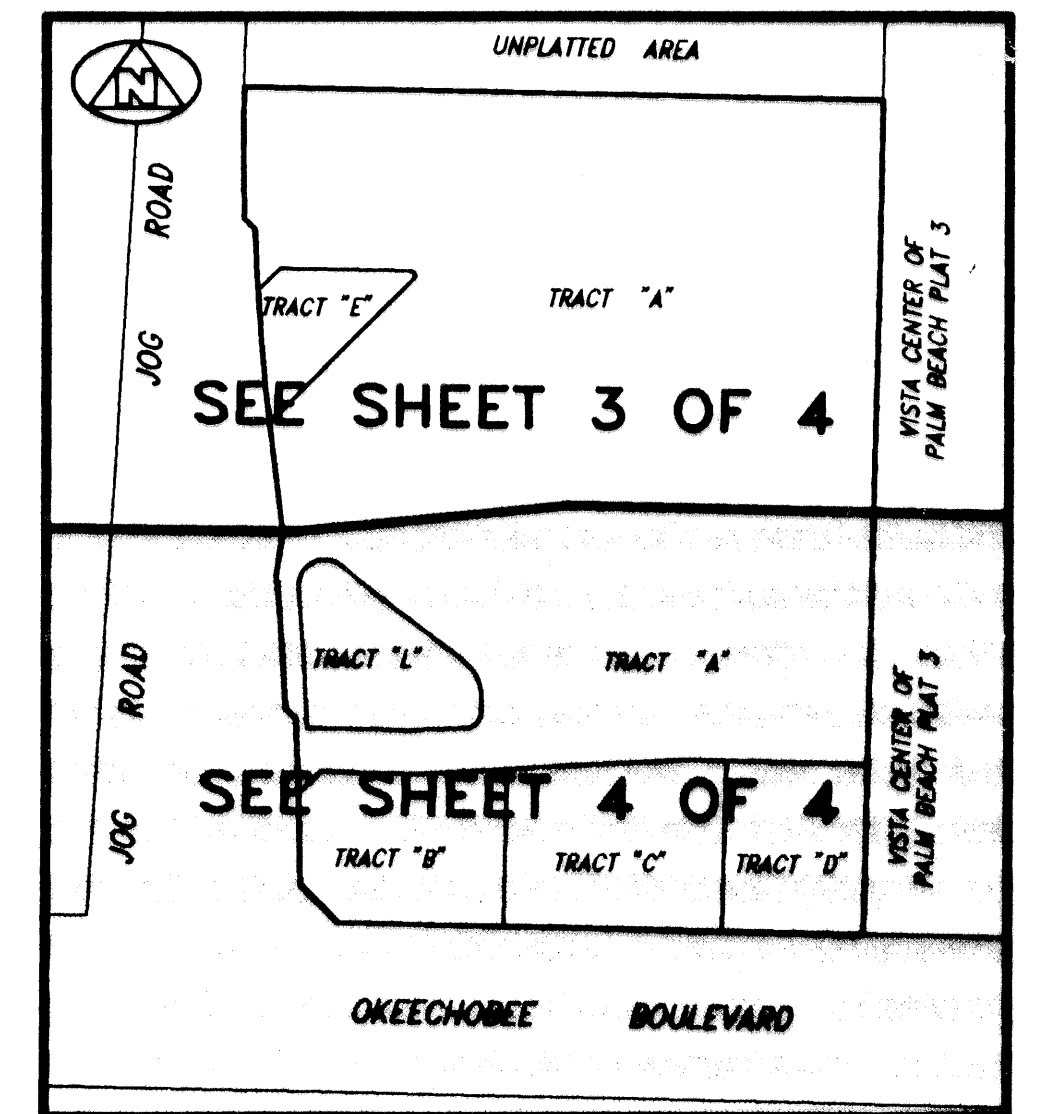
POINT OF COMMENCEMENT
SOUTHWEST CORNER-SECTION 22/43/42
(DESTROYED)



FOUND P.B.CO.
CONCRETE MONUMENT
VISTA / ADR 10
N 863879.94
E 932971.45



0 20 40 80
GRAPHIC SCALE
(IN FEET)



KEY MAP

NOT TO SCALE

- SURVEYOR'S NOTES AND LEGEND:
1. LINES WHICH INTERSECT CURVES ARE NOT RADIAL, UNLESS OTHERWISE NOTED.
 2. C/L DENOTES CENTERLINE
 3. R/W DENOTES RIGHT OF WAY
 4. O.R.B. DENOTES OFFICIAL RECORDS BOOK
 5. [Symbol] PRM DENOTES A SET #2424 PERMANENT REFERENCE MONUMENT (P.R.M.)
 6. N=987645.17 = NORTHERING COORDINATE
E=865432.26 = EASTING COORDINATE
 7. P.B.CO. DENOTES PALM BEACH COUNTY

THIS INSTRUMENT WAS PREPARED BY WM. R. VAN CAMPEN, R.L.S., IN AND FOR THE OFFICES OF BENCH MARK LAND SURVEYING & MAPPING, INC., 4152 WEST BLUE HERON BOULEVARD, SUITE 121, RIVIERA BEACH, FLORIDA

BENCH MARK
Land Surveying and Mapping, Inc.
4152 West Blue Heron Blvd, Suite 121, Riviera Beach, FL 33404
Fax (407) 844-9659 Phone (407) 848-2102

RECORD PLAT
LAKE POINT CENTRE

| | | | | | | |
|-----|--------|-----------|-------|----------|-------|--------|
| DWN | S.E.C. | FB | DATE | 05/30/96 | WO.# | P180 |
| CKD | FILE | PLATT.dwg | SCALE | 1" = 40' | SHEET | 4 OF 4 |

SUBDIVISION * LAKE POINT CENTRE
BOOK 79
PAGE 64
FLOOD MAP
ZONING
QUAD
SE
PUD NAME CITY OF WEST PALM BEACH